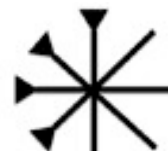
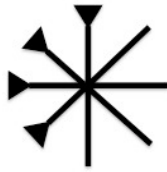


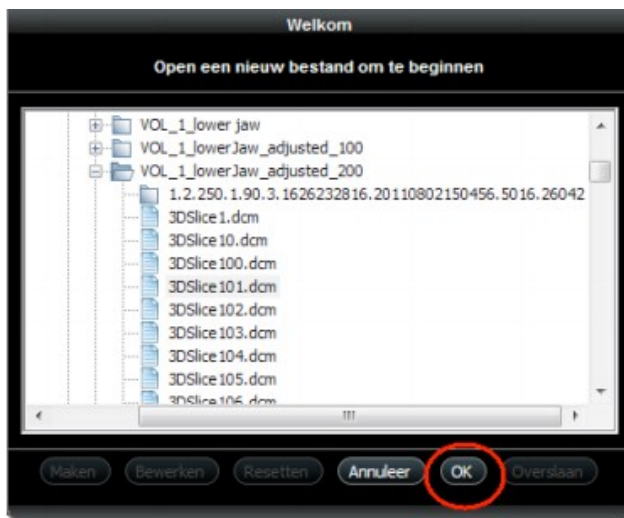
# DICOM Export Protocol Kodak CBCT to AxisGuide Pro



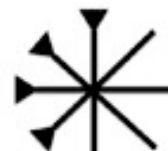


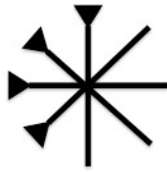
## Export DICOM from Kodak to AxisGuide Pro.

1. Startup the Kodak software.
2. In the welcome screen browse to the folder where your scan data is saved, select a file and click “ok” to import the data in the Kodak software.



3. Enter a “Volume Name”, select a voxel size “200µm” and click “Ok” in next screen.





4. A folder with “volume name” that you have entered is created next to the folder containing the scan data. Your dataset is exported and the DICOM’s can be found in folder.
5. Put the exported dicom folder in AxisGuide\_Cases folder.

## Import DICOM to AxisGuide Pro

1. Open AxisGuide Pro.

2. Click on  to open the DICOM.

3. Select the DICOM file and then click on Mandible or Maxilla or Head.

